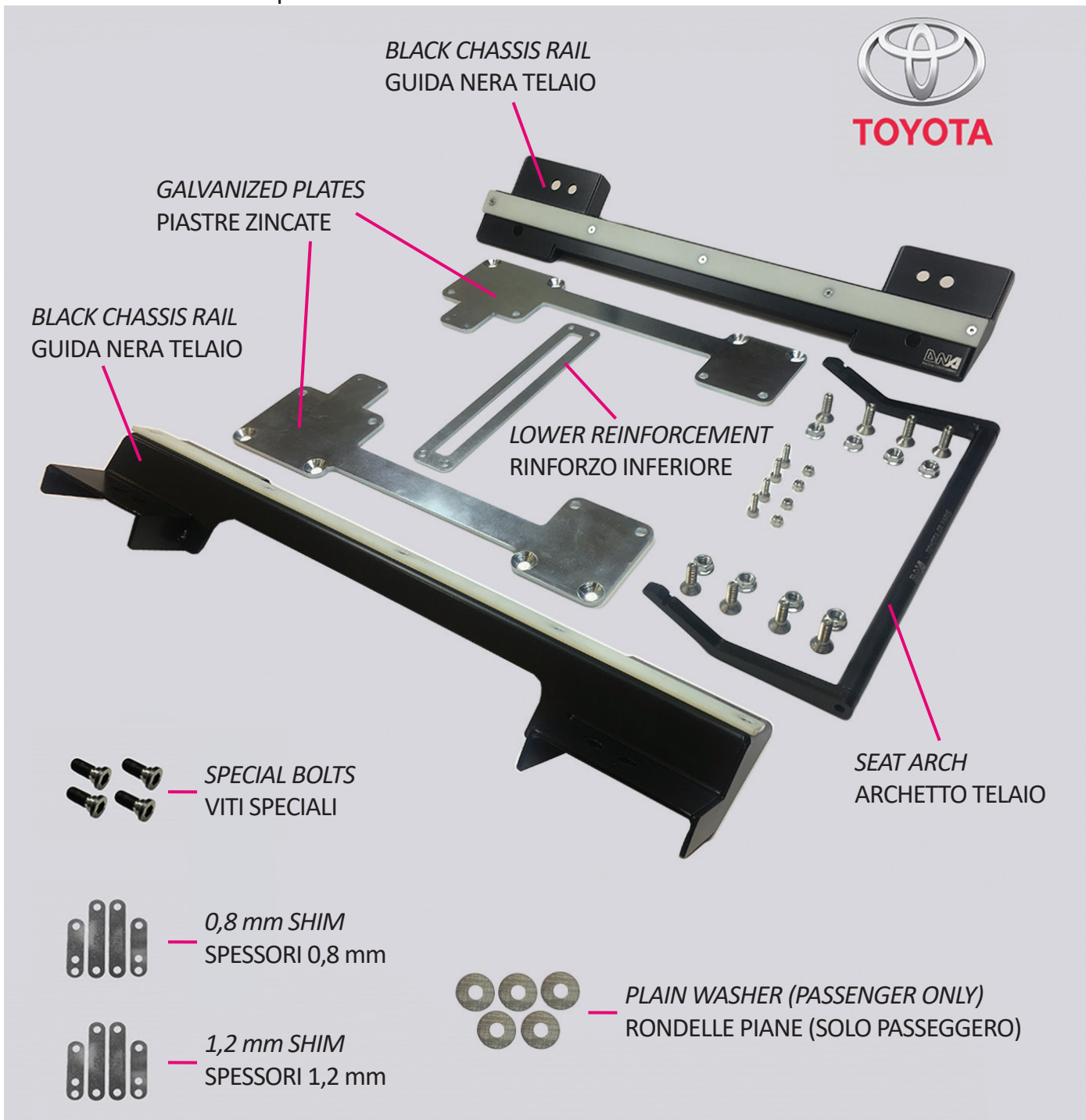


## PC1789 TOYOTA GR YARIS

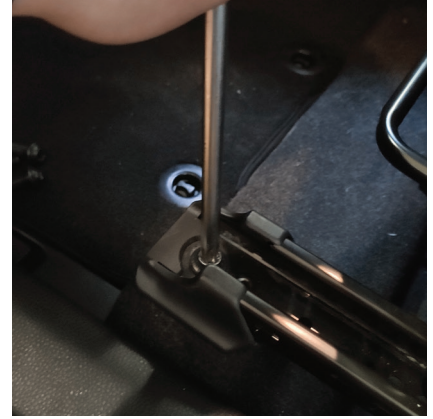
- SEAT LOWERING KIT ASSEMBLY INSTRUCTION pag. 2
- ISTRUZIONI ASSEMBLAGGIO KIT ABBASSAMENTO SEDILE pag. 8

The kit includes all the components shown below  
Il kit include tutti i componenti mostrati sotto

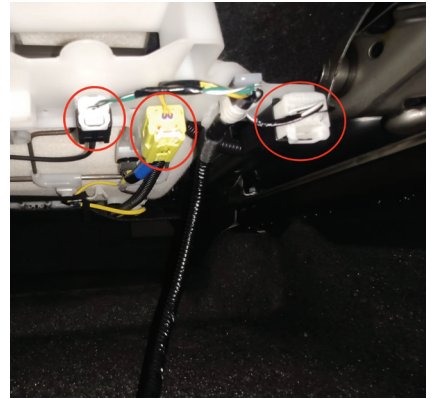


## DRIVER SIDE

1. Remove the four bolts that hold the seat on the chassis using a T50 torx key.

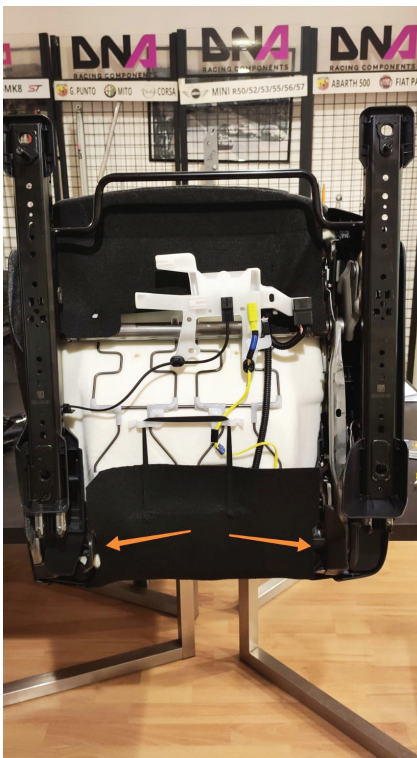


2. Slightly raise the seat and disconnect the two connectors of the airbag and one of the seat heating system (where provided), using a small screwdriver.

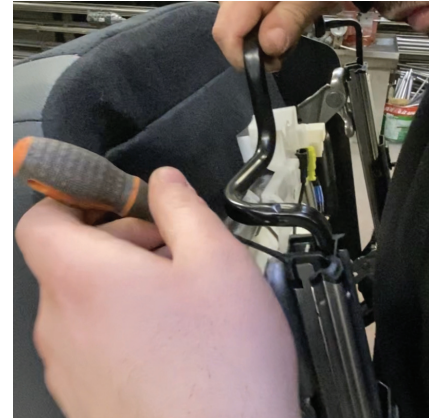


3. Remove the complete seat from the vehicle and lay it on a table. Position the seat in its highest position using the adjustment lever.

4. (Optional) Remove the two little parts of the seat trim shown below, using a air hack-saw.



5. Remove the seat arch adjuster using a small screwdriver in order to disconnect it from the rails on both sides.



6. Remove the eight M8 nuts that hold the seat rails to the seat, using a 12 mm spanner.



7. Disconnect the rails and remove the four plastic trim of the seat rails too. You don't need them anymore.

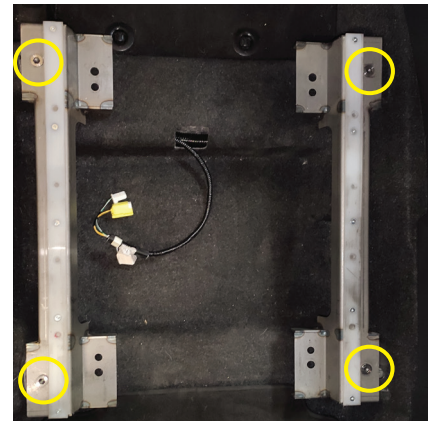
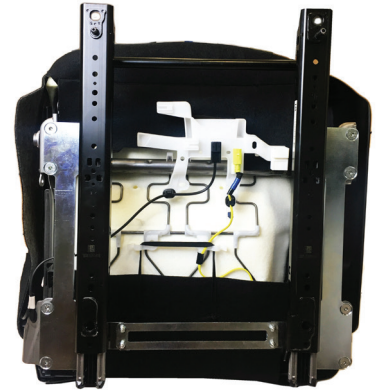


8. Take a 12 mm spanner and a 5 mm allen key to connect the left and the right rails to the galvanized plates trough the eight M8 nuts that you removed on point 6.

Remember to interpose the four 0,8mm shim between the rails and the galvanized plates.

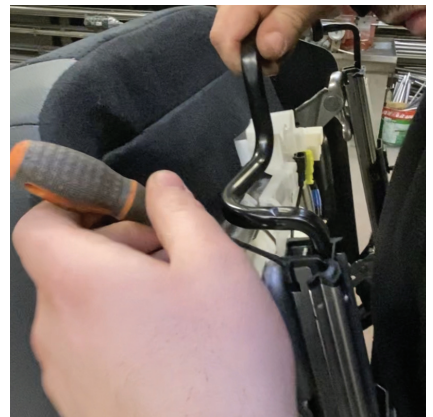
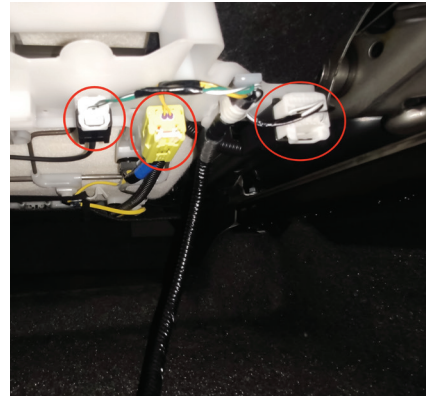
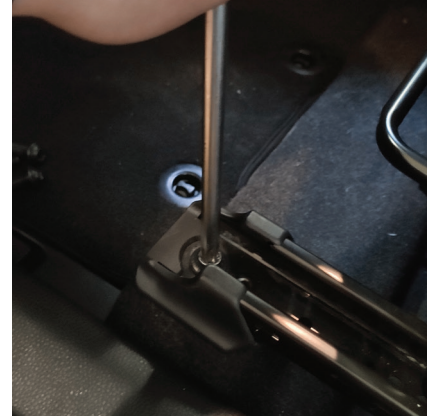


9. Once the rails have been assembled with the galvanized plates, you can connect the rails to the seat using the eight hexagonal countersunk head screws and the eight flanged nuts supplied in the kit.
10. Connect the lower reinforcement using the four M5x16 hex socket head screw and the four M5 self locking nuts supplied in the kit.
11. Fit the new adjustable seat arch supplied in the kit.
12. Fit the two black chassis rails on the car using the four M10x1,25 special bolts supplied in the kit.
13. Now you are ready to fix the complete seat, as prepared on point 9 on the vehicle. Lay the seat on the black chassis rails, connect the three connectors, and then secure the seat using the stock Toyota M10x1,25 bolts you have removed at point 1 and four M10 self-locking nuts.
14. If you want you can spray a bit of WD40 on the nylon sliding plates to reduce friction and allow a smoother movement.



## PASSENGER SIDE

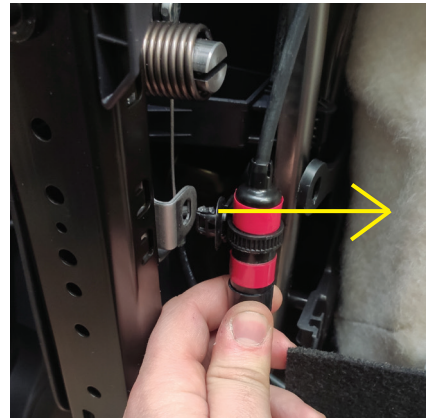
1. Remove the four bolts that hold the seat on the chassis using a T50 torx key.
2. Slightly raise the seat and disconnect the two connectors of the airbag and one of the seat heating system (where provided), using a small screwdriver.
3. Remove the complete seat from the vehicle and lay it on a table.
4. Remove the seat arch adjuster using a small screwdriver in order to disconnect it from the rails on both sides.
5. Remove the five M8 nuts that hold the seat rails to the seat, using a 12 mm spanner.



6. Disconnect the rails and remove the four plastic trim of the seat rails too. You don't need them anymore.



7. Disconnect the red cable connection from the retaining clip on the seat rail.



8. Clamp the red cable connection to plastic plate on the seat.

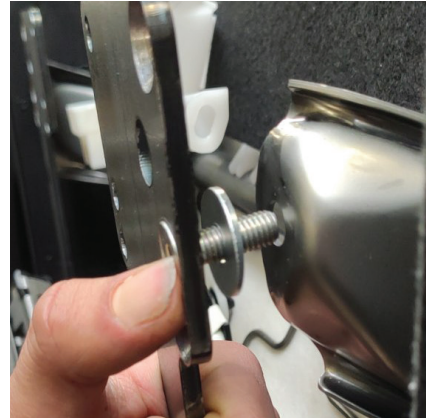


9. Take a 12 mm spanner and a 5 mm allen key to connect the left and the right rails to the galvanized plates through the five M8 nuts that you removed on point 5.

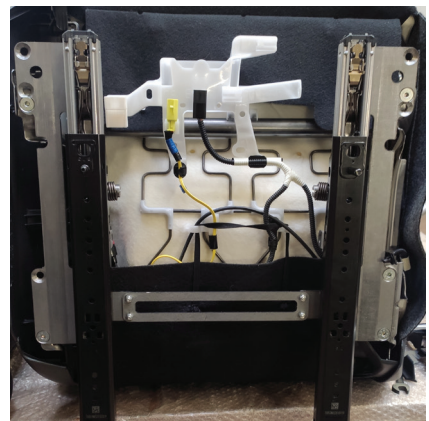
Remember to interpose the four 1,2mm shim between the rails and the galvanized plates.



10. Once the rails have been assembled with the galvanized plates, you can connect the rails to the seat using the five hexagonal countersunk head screws and the five flanged nuts supplied in the kit interposing the five plain washers as shown.

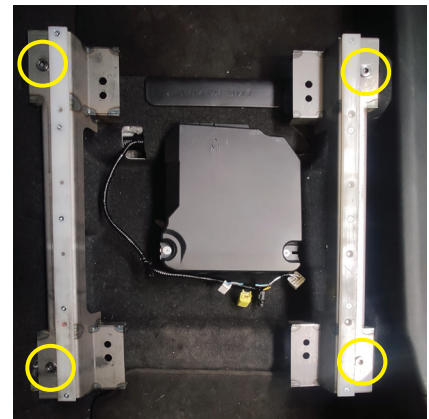


11. Connect the lower reinforcement using the four M5x16 hex socket head screw and the four M5 self locking nuts supplied in the kit.

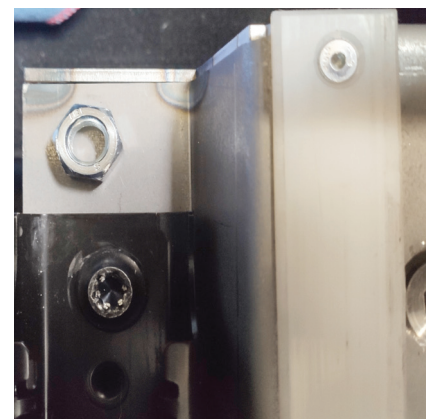


12. Fit the new adjustable seat arch supplied in the kit.

13. Fit the two black chassis rails on the car using the four M10x1,25 special bolts supplied in the kit.



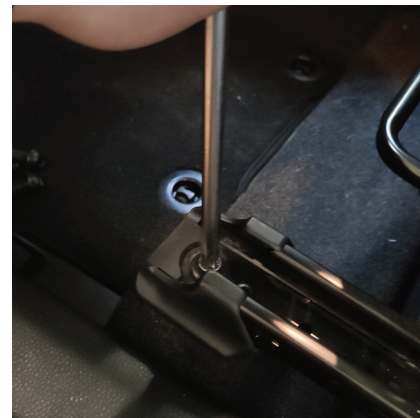
13. Now you are ready to fix the complete seat, as prepared on point 10 on the vehicle. Lay the seat on the black chassis rails, connect the three connectors, and then secure the seat using the stock Toyota M10x1,25 bolts you have removed at point 1 and four M10 self-locking nuts.



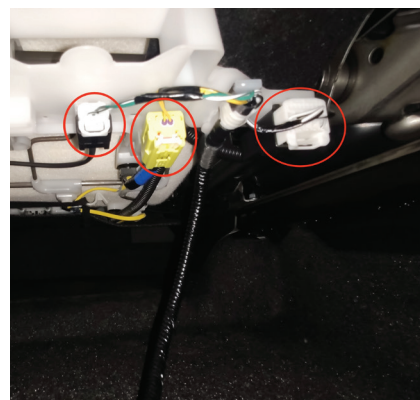
14. If you want you can spray a bit of WD40 on the nylon sliding plates to reduce friction and allow a smoother movement.

## LATO GUIDATORE

1. Rimuovere le quattro viti che fisano la guida del sedile al telaio usando una chiave torx T50.

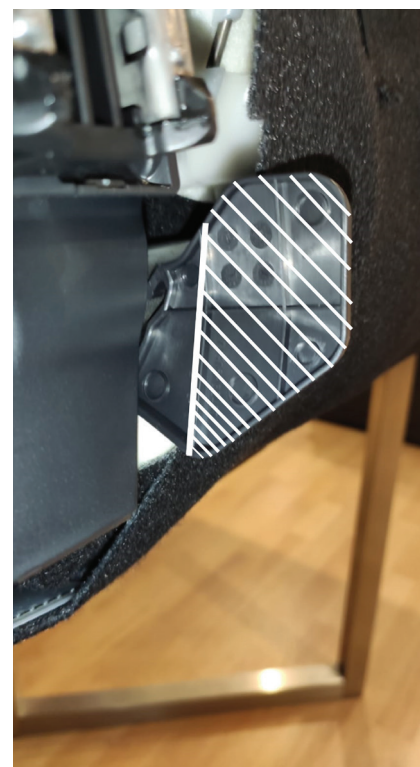
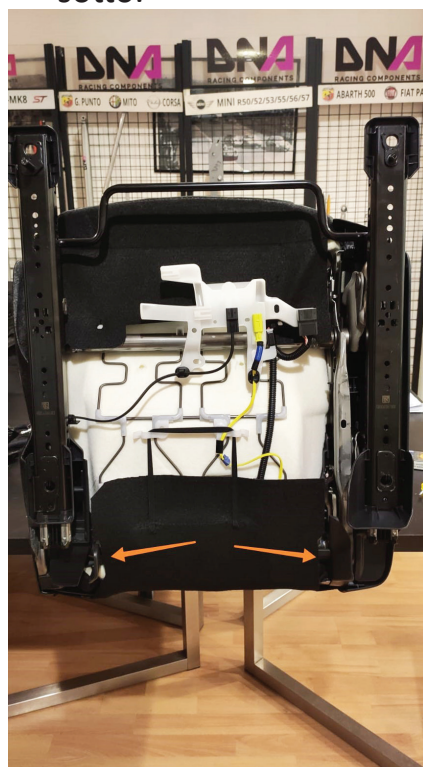


2. Sollevare leggermente il sedile e disconnettere i due connettori dell'airbag e il connettore del riscaldamento sedile (ove previsto), usando un piccolo cacciavite.



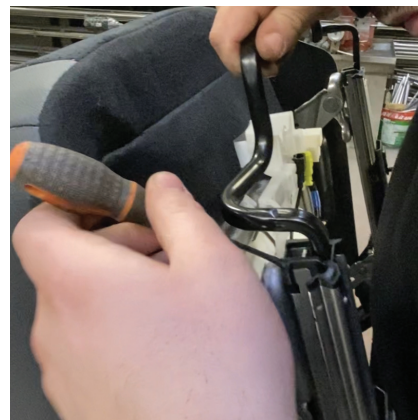
3. Rimuovere completamente il sedile dal veicolo e adagiarlo su un piano. Portare il sedile nella sua posizione più alta usando l'apposita leva.

4. (Opzionale) Utilizzare un seghetto ad aria per rimuovere le parti in plastica evidenziate sotto.





5. Rimuovere l'archetto di regolazione del sedile facendo leva con un piccolo cacciavite da entrambi i lati.



6. Svitare gli otto dadi M8 che fissano il sedile alla guida usando un chiave inglese da 12 mm.



7. Separare le guide dal sedile e staccare le quattro coperture in plastica (che non serviranno più).



8. Servirsi di una chiave inglese da 12 mm e di una chiave a brugola da 5 mm per assemblare la guida destra e la guida sinistra sulle piastre zincate, fissandole mediante gli otto dadi M8 rimossi al punto 6.



Ricordarsi di interporre i quattro spessori da 0,8 mm tra le guide e le piastre zincate.

9. Una volta assemblate le guide sulle piastre zincate, è possibile connettere tale assieme al sedile utilizzando le otto viti svasate e i relativi dadi flangiati forniti nel kit.

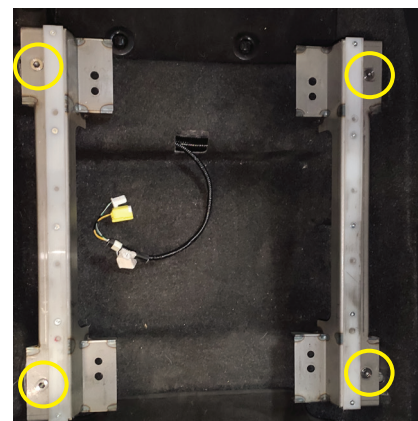
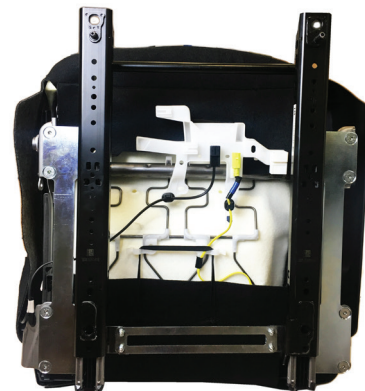
10. Fissare il rinforzo inferiore mediante le quattro viti esagonali M5x16 e i quattro dadi autobloccanti M5 forniti nel kit.

11. Calzare il nuovo archetto di regolazione del sedile.

12. Fissare le due guide nere sul veicolo utilizzando le quattro viti speciali M10x1,25 fornite nel kit.

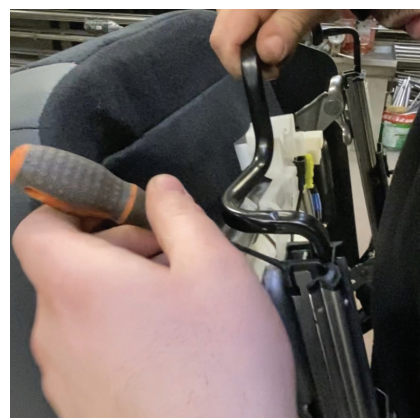
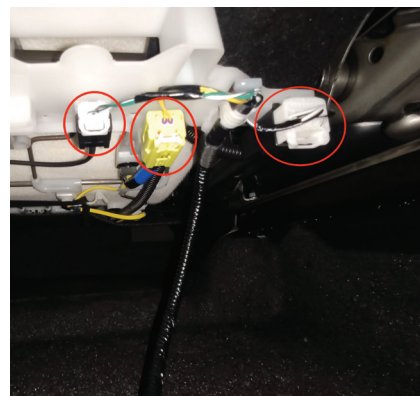
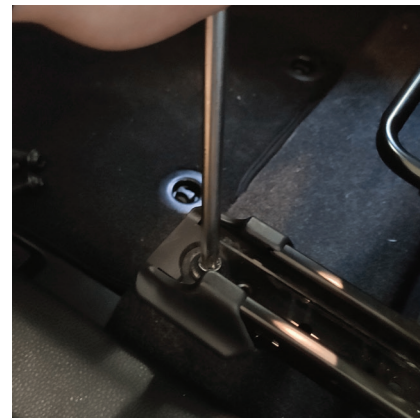
13. Ora è possibile fissare il sedile completo, così come preparato al punto 9, sul veicolo. Adagiare il sedile sulle guide nere, collegare i tre connettori e, infine, ancorare il sedile mediante le viti M10x1,25 di serie, rimosse al punto 1, e i quattro dadi autobloccanti M10.

14. Volendo si può spruzzare un po' di WD40 sulle guide in nylon per ridurre la frizione e permettere un movimento più fluido.



## LATO PASSEGGERO

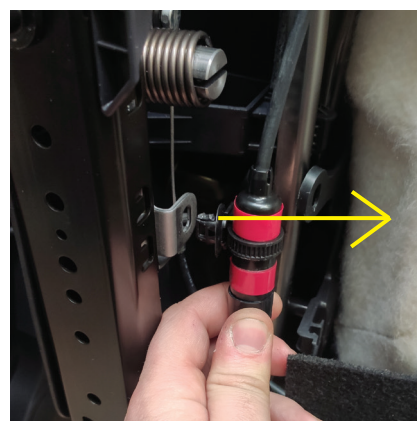
1. Rimuovere le quattro viti che fissano il sedile al telaio usando una chiave torx T50.
2. Sollevare leggermente il sedile e disconnettere i due connettori dell'airbag e il connettore del riscaldamento sedile (ove previsto), usando un piccolo cacciavite.
3. Rimuovere completamente il sedile dal veicolo e adagiarlo su un piano.
4. Rimuovere l'archetto di regolazione del sedile facendo leva con un piccolo cacciavite da entrambi i lati.
5. Svitare i cinque dadi M8 che fissano il sedile alla guida usando una chiave inglese da 12 mm.



6. Separare le guide dal sedile e staccare le quattro coperture in plastica. (che non serviranno più).



7. Staccare il cavo rosso dall'anello di ritegno sulla guida sedile.



8. Fissare il cavo rosso alla piastra in plastica sul sedile.



9. Servirsi di una chiave inglese da 12 mm e di una chiave a brugola da 5 mm per assemblare la guida destra e la guida sinistra sulle piastre zincate, fissandole mediante i cinque dadi M8 rimossi al punto 5.

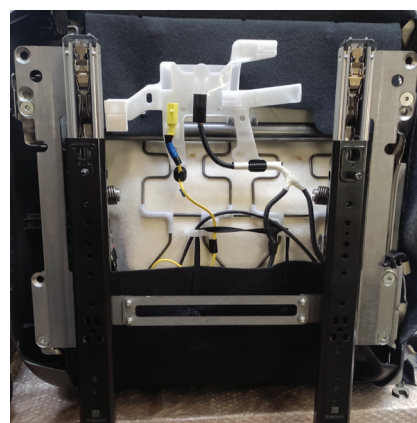


Ricordarsi di interporre i quattro spessori da 1,2 mm tra le guide e le piastre zincate.

10. Una volta assemblate le guide sulle piastre zincate, è possibile connettere tale assieme al sedile utilizzando le cinque viti svasate e i relativi dadi flangiati forniti nel kit, interponendo le rondelle come mostrato a fianco

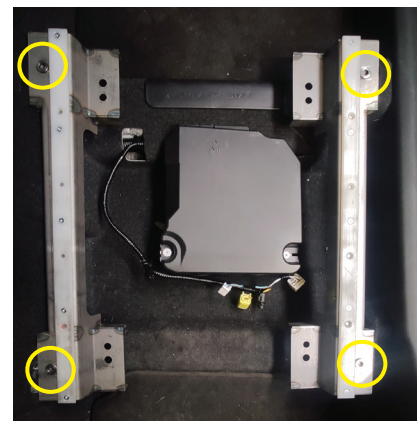


11. Fissare il rinforzo inferiore mediante le quattro viti esagonali M5x16 e i quattro dadi autobloccanti M5 forniti nel kit.

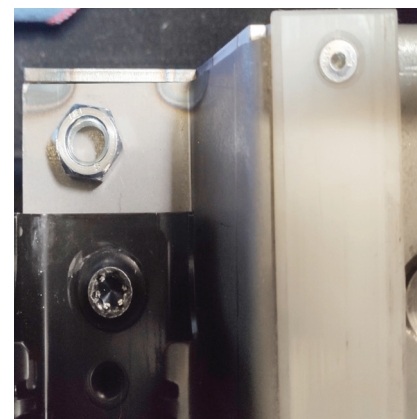


12. Calzare il nuovo archetto di regolazione del sedile.

13. Fissare le due guide nere sul veicolo utilizzando le quattro viti speciali M10x1,25 fornite nel kit.



13. Ora è possibile fissare il sedile completo, così come preparato al punto 10, sul veicolo. Adagiare il sedile sulle guide nere, collegare i tre connettori e, infine, ancorare il sedile mediante le viti M10x1,25 di serie, rimosse al punto 1, e i quattro dadi autobloccanti M10.



14. Volendo si può spruzzare un po' di WD40 sulle guide in nylon per ridurre la frizione e permettere un movimento più fluido.